



## Your Part in the Annual Health Check

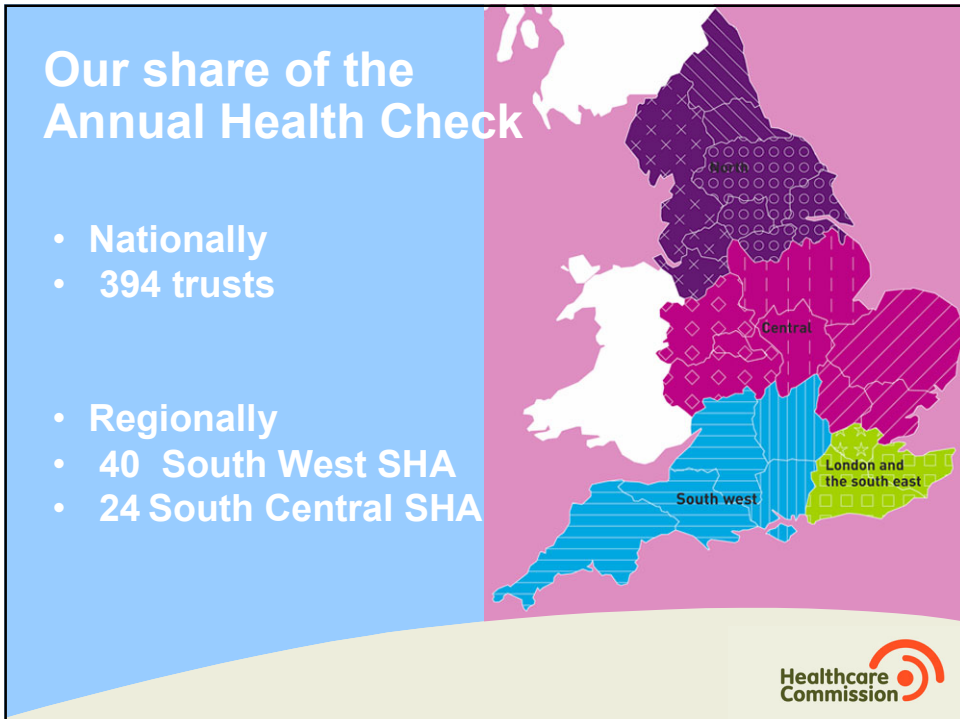
Kouser Chaudry  
Kate Dew  
7<sup>th</sup> December 2007

## Agenda

**1 Engagement in the annual health check**

**2 The impact in 2006/2007**

**3 Increasing the impact in 2007/2008**



## Last Year

**2** trusts rated **Excellent** for Quality of Services and  
**Excellent** for Use of Resources

**24** trusts were rated **Weak** for Quality of Services  
and **Weak** for Use of Resources

## Nationally ... 2007

**19** trusts rated **Excellent** for Quality of Services  
and **Excellent** for Use of Resources

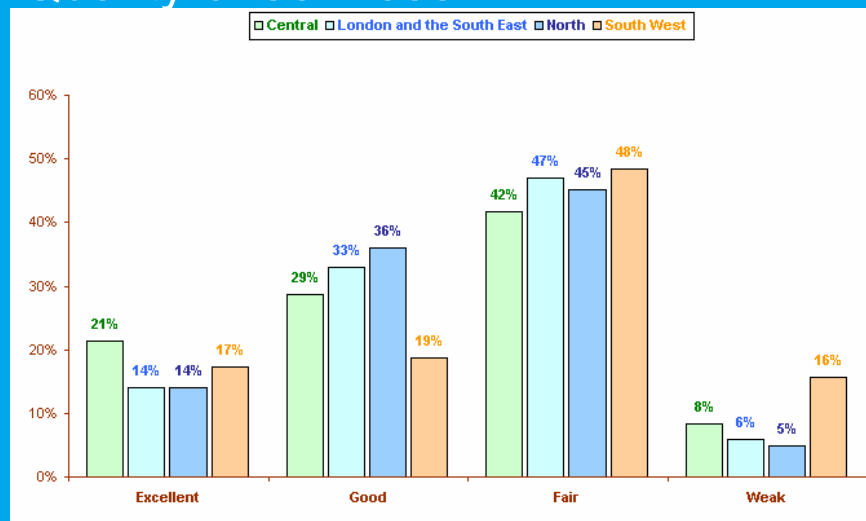
**20** trusts were rated **Weak** for Quality of Services  
and **Weak** for Use of Resources

## Regionally ... 2007

**2** trusts rated Excellent for Quality of Services and Excellent for Use of Resources

**6** trusts were rated Weak for Quality of Services and Weak for Use of Resources

## Quality of services



## Local results

- Buckinghamshire Hospitals NHS Trust  
WEAK      GOOD
- Buckinghamshire PCT  
FAIR      WEAK
- Oxfordshire and Buckinghamshire Mental Health Partnership  
FAIR      GOOD
- South Central Ambulance Trust  
FAIR      GOOD

## Involvement in regulation .....the annual health check

### Third parties....

- Patient and public involvement forums (PPIFs)
- Overview and scrutiny committees (OSCs)
- Foundation trusts' board of governors (FTBs)
- Strategic health authorities (SHAs)

## Involvement in regulation... annual health check 2006/2007

We received a total of 1469 commentaries:

- 394 from patient and public involvement forums (100%)
- 625 from overview and scrutiny committees (99%)
- 58 from foundation trust boards (93%)
- 392 from strategic health authorities (99%)

## Involvement in regulation... annual health check 2005/2006

- **Assessment managers:** read commentaries and allocated them to an analyst
- **Analysts:**
  1. Assessed the commentary for data quality
  2. Extracted items of intelligence that could be applied to one or more standards
  3. Defined the items as positive or negative
  4. Gave the items a weighting

## 2006/2007 impact?....

1469 commentaries

Data Quality :	Low	Medium	High	no comment
FTs	22%	34%	10%	33%
OSCs	34%	41%	6%	19%
Forums	21%	55%	19%	4%
SHAs	41%	30%	4%	25%
All	32%	42%	9%	17%

## 2006/2007 impact?....

8196 items of intelligence

### Positive about compliance with a standard:

FTs	90%
OSCs	70%
Forums	58%
SHAs	80%
All	66%

## 2006/2007 impact?....

8196 items of intelligence

Weighting :	Low	Medium	High	Items
FTs	44%	50%	7%	306
OSCs	50%	44%	6%	2229
Forums	50%	43%	7%	4379
SHAs	58%	38%	4%	1282
All	51%	43%	6%	8196

## 2006/2007 impact?.... most commented on standards...

- C 17 Involvement (17%)
- C 18 Equality of access (8%)
- C 4a Healthcare associated infection (6%)
- C 6 Cooperation with other organisations (5%)
- C 21 Environment & Cleanliness (5%)



# Buckinghamshire PH OSC

## Commentary Report

- Buckinghamshire PCT
- Buckinghamshire Hospitals NHS Trust
- Oxfordshire and Buckinghamshire Mental Health Partnership Trust
- South Central Ambulance Trust

## examples of poor quality commentary

C4a – Healthcare organisations keep patients, staff and visitors safe by having systems to ensure that the risk of health care acquired infection to patients is reduced, with particular emphasis on high standards of hygiene and cleanliness, achieving year-on-year reductions in MRSA

*The Governors have been particularly impressed by the low incidence rate of MRSA recorded at the hospital.*

C17 - The views of patients, their carers and others are sought and taken into account when designing, planning, delivering and improving health care services.

*The forum feels that the PCT is committed to patient and public involvement in principle however; this is not always effective in practice.*

C6 – Healthcare organisations cooperate with each other and social care to ensure that patients' individual needs are properly managed and met.

*Overview and scrutiny committee: Overall, the Trust appears to co-operate effectively with other Trusts and social care organisations.*

## example of high quality commentary

C4a – Healthcare organisations keep patients, staff and visitors safe by having systems to ensure that the risk of health care acquired infection to patients is reduced, with particular emphasis on high standards of hygiene and cleanliness, achieving year-on-year reductions in MRSA

*The use of an antibacterial gel is mandatory for staff and visitors in various parts of the hospitals. The use of the gel is promoted actively and mostly complied with. Effective warning signs and the promotion of the use of the gel are in place in major parts of \*\*\*\*Foundation Trust. It is a recognised fact that staff need to keep vigilant with regard to visitors entering the wards and using the gel. It is a matter of effective on-going education and promotion of the usage of the gel. The Director of Nursing has visited the wards and assessed the use of the gel. The numbers of MRSA and other bacterium patient findings have significantly fallen. Where necessary, patients are barrier nursed and effective and clear notices are in place to make the relatives and other visitors aware of the correct procedures. The Governing Council is kept up to date with current statistics. This is reviewed when necessary. Recently a new nurse specialist in infection control has been appointed. Every effort is made, wherever possible, to maintain a strong vigilance in effective infection control.*

## Increasing the impact for 2007/2008...

### The most useful commentaries:

- gave information in a clear and concise way
- related to one or more standards
- made specific reference to issues covered by a standard
- contained supporting evidence from a range of sources
- included detailed information, for example: dates, outcomes



**Annual Health Check 2007/2008**

**Key dates**

21st April 2008 - Midday 30th April 2008 – submission of declarations

16th May 2008 - trust declarations made public

October 2008 - results of annual health check published

Healthcare Commission 



Thank you

[Kouser.chaudry@healthcarecommission.org.uk](mailto:Kouser.chaudry@healthcarecommission.org.uk)

Healthcare Commission 